

Wika Ranch

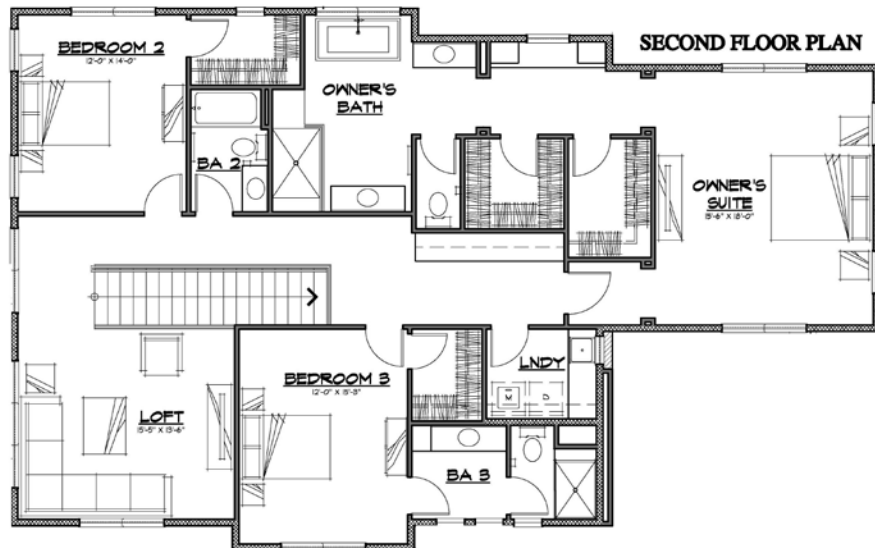
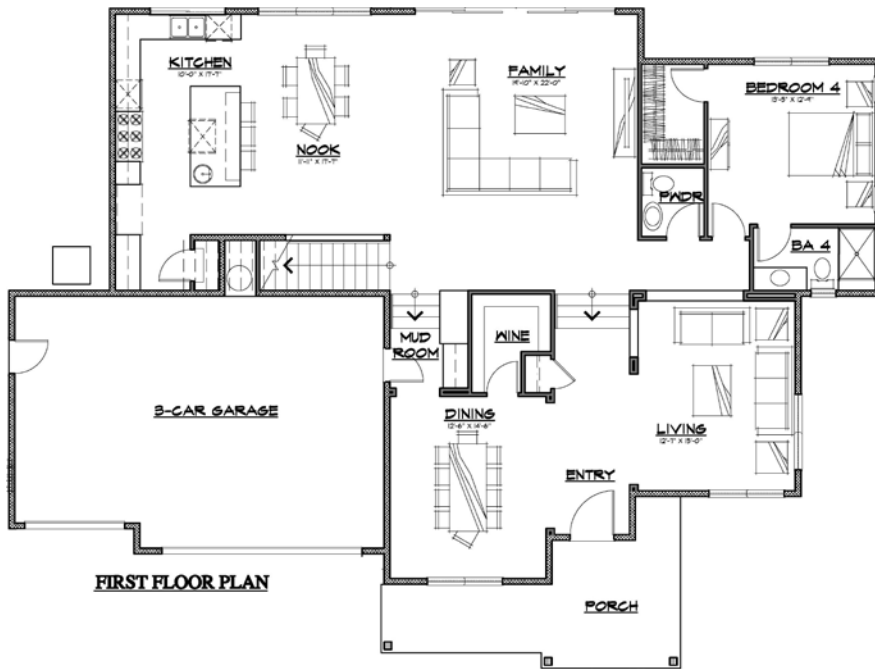
Residence Six– 116 Wika Ranch Court, Emerald Hills, CA

Approximately 3,844 square feet on a Lot Size of 17,354 square feet

4 bedrooms including an entry level junior suite, 4-1/2 baths, loft and 3-car garage



Now Selling - \$5,195,000



Wika Ranch
Residence Six - 116 Wika Ranch Court
Features List

A Rare Opportunity

- New luxury estate home in San Mateo County's coveted Emerald Hills neighborhood, nestled between Woodside and Redwood City
- Elegant 3,844 square foot two-story home situated on a 17,354 square foot property located on a private court
- The home's main level features a gourmand's kitchen, living room, dining room with adjacent wine room, guest suite and powder room. The luxurious second floor features a grand owner's suite, junior suite and one additional bedroom, a bright and versatile loft, hall bath and laundry room. The home has a three-car garage
- Wika Ranch is centrally located between San Francisco and Silicon Valley with easy access to Highways 280 and 101
- Public schools serving Wika Ranch include Roy Cloud Elementary School (K-8) and Woodside High School (subject to enrollment constraints)

Distinctive Exterior

- Modern Craftsman architecture with board and batt exterior siding with smooth hand applied stucco finish
- Custom Andersen single-hung windows and patio doors in a bronze finish
- Insulated garage doors with glass panel details with wi-fi and battery back-up openers
- Gracious private entrance with eight-foot contemporary entry door
- Custom front and rear yard landscaping, with custom flagstone patios and contemporary horizontal private fencing
- Fire resistant overhangs and siding materials; leaf guard over gutters for enhanced fire protection

Impressive Interior

- Nine, ten and twelve-foot ceiling heights
- Formal dining room with temperature-controlled wine room adjacent
- Solid-core two vertical panel interior doors with chrome lever hardware
- Custom tile flooring at baths and laundry room
- Beautiful hardwood flooring throughout most main floor living areas
- Sound-travel mitigating interior wall insulation
- Old World smooth drywall finish with custom Kelly-Moore paint color schemes and accents

Creature Comforts and Security

- Wireless alarm system
- Automatic fire sprinklers
- Gas service stubbed to the front of the property for future outdoor uses
- Glass-enclosed electric fireplace in family room with tile surround
- Dual-zone central heating and air conditioning systems with Nest™ automatic setback thermostats
- Nest™ front doorbell camera

Gourmet Kitchen

- Chef's kitchen with spacious island including prep sink
- Hardwood cabinetry in a two-tone Cleaf finish with full extension, soft-close drawers and cabinets doors, adjustable upper shelves, pull-out pot drawers and concealed hinges
- The chef's professional kitchen appliances package includes:
 - AGA Professional 48" induction free-standing range with three unique ovens
 - Custom wooden hood with 900+ cfm exhaust fan insert
 - Wolf 30" speed oven with microwave and convection features
 - Thermador 48" side-by-side built-in refrigerator with custom cabinet panels
 - Thermador multi-cycle 3-rack dishwasher with stainless steel interior and custom wooden panels
- Quartz solid surface countertops and complementary tile backsplash
- Oversized stainless-steel sink with contemporary pull-out spray faucet

**Wika Ranch
Residence Six - 116 Wika Ranch Court
Features List**

Owner's Suite

- Large free-standing bathtub with deck-mounted valve and hand-held spray wand
- Separate over-sized walk-in shower with tile surround
- Dual shower valve controls with separate shower head and hand-held shower wand
- Separate free-standing furniture-style vanity with quartz countertops, vitreous china sinks, Toto™ toilets and Kohler plumbing fixtures in chrome finish

Secondary Bedrooms

- Solid surface countertops with backsplash
- Tile and solid surface (per room) shower surrounds
- Kohler plumbing fixtures and bath hardware in chrome finish
- Heavy glass shower enclosures with chrome finish trim
- Closet organizers in each bedroom

Included Green Features

- 6.0 kw Solar system
- All electric 80-gallon hybrid water heater with on-demand water sensors throughout the home to speed hot water delivery
- All electric dual-zone high efficiency heat pump and air conditioning
- Garage is pre-wired for 50-amp car charger
- High-quality MERV 13+ return air filters
- Energy efficient light fixtures
- Non-combustible exterior plaster and roofing materials
- Low emitting insulation at walls and ceilings
- Low VOC caulking, paints and construction adhesives

In an effort to continuously improve its product and to respond to changing market conditions, Edenbridge Homes reserves the right to alter floorplans, elevations, specifications, amenities, finishes, pricing and availability without prior notice. The floorplans, elevations, colors and finishes as represented herein are of a conceptual nature only and may not reflect the final product.