

# Wika Ranch

Residence Two – 4049 Jefferson Avenue, Emerald Hills, CA

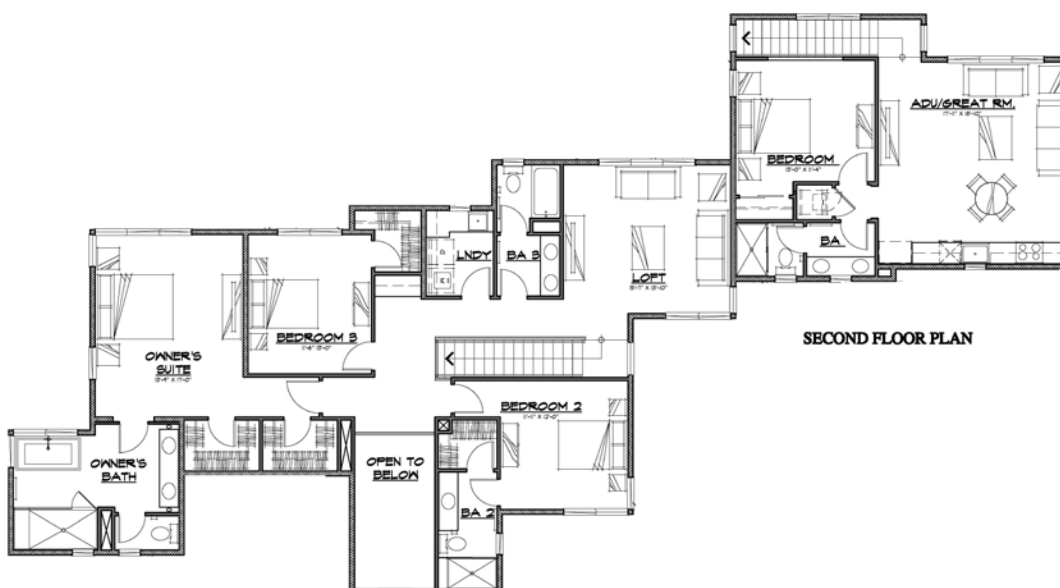
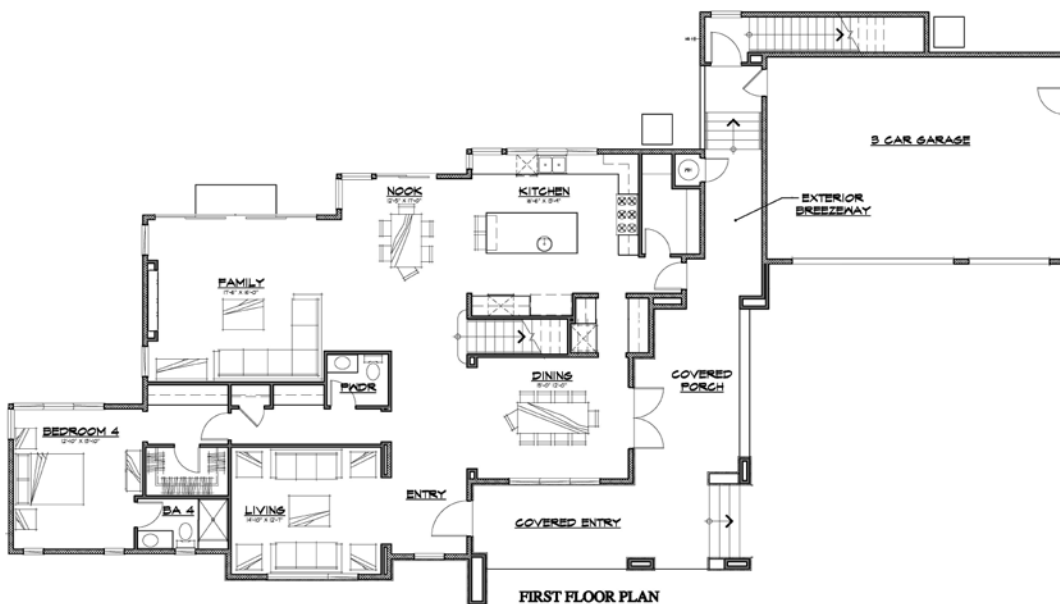
Home is approx. 4,421 square feet on a lot that measures 16,188 square feet

Main Residence is 4 bedrooms, 4-1/2 baths plus a Loft

In addition, enjoy a Separate 1 Bedroom, 1 Bath Aupair Residence over 3-car Garage




Now Available!



This elegant estate home was designed with comfort and busy lifestyles in mind. Its lofty entry opens to a formal living room to welcome and host visitors. The grand dining room is served through a butler pantry pass-through by a kitchen that will be the delight of any gourmand with its inviting large, central island and walk-in pantry. The spacious nook and family room overflow with natural light and the glorious views unique to the Emerald Hills lifestyle. Tucked away behind the living room is a spacious junior suite offering cozy privacy and serenity for visiting friends or family members. Meander up the graceful staircase to find a spacious owner's suite, a secondary bedroom as well as another junior suite, all served by a conveniently located laundry area. A spacious loft offers the versatility of a media center, a study room, or game room. Residence Two features a separate aupair residence over the 3-car garage with its own private entrance leading to a comfortable bedroom and bath with a fully equipped kitchen.

Edenbridge Homes  
[www.edenbridgehomes.com](http://www.edenbridgehomes.com)

Equal Housing Opportunity 

Site plan, floorplans and elevations are artist's conceptions only.

**4049 Jefferson Avenue  
Wika Ranch - Residence Two  
Features List**

**A Rare Opportunity**

- New luxury estate home in San Mateo County's coveted Emerald Hills neighborhood, nestled between Woodside and Redwood City
- Elegant estate 4,421 square foot residence situated on a private and spacious 16,188 sf lot
- Amenities include four full baths, a powder room, a first-floor guest suite and three-car garage. Upstairs features a luxurious Owner's suite, a junior suite and one additional bedroom, plus a versatile loft. Unique to this home in the Wika Ranch collection is an accessory dwelling unit (ADU) constructed over the garage featuring sweeping views of the southern Bay Area, a private bedroom, bath, spacious great room, fully-equipped kitchen and pre-plumbed for washer and dryer
- Centrally located between San Francisco and Silicon Valley with easy access to Highways 101 and 280
- Public schools serving the community include Roy Cloud Elementary School (K-8), and Woodside High School (subject to enrollment constraints)

**Distinctive Exterior**

- Modern prairie style architecture with hipped roof lines, fully soffited eaves, horizontal siding and hand applied sand stucco finish
- Architectural flat concrete tile roofing
- Custom Andersen windows and patio doors in dark bronze finish
- Custom bronze finished, insulated garage doors with glass panel details, Wi-Fi and battery back-up openers
- Gracious private entrance with custom eight-foot contemporary entry door
- Custom front and rear yard landscaping including paver and flag stone patios, custom seating areas, mature planting and privacy fencing
- Fire resistant overhangs and siding materials; leaf guard over gutters for enhanced fire protection

**Impressive Interior**

- Nine-, ten- and eleven-foot ceilings at first floor and nine- and ten-foot second floor ceilings.
- Formal dining room
- Solid core three-panel interior doors and trim with chrome lever hardware
- Sound deadening fiberglass insulation between floors and at all interior walls
- Custom tile flooring at baths and laundry room
- Beautiful hardwood flooring throughout the entire first floor
- Solid hardwood stairs and railings with contemporary stainless-steel balusters
- Old World smooth drywall finish with high quality Kelly-Moore paint in contemporary color schemes and accents

**Creature Comforts & Security**

- Wireless alarm system
- Automatic fire sprinklers
- Gas service stubbed to front of property for future outdoor uses
- Glass-enclosed electric fireplace in family room with complete tile surround
- **NEST™** front door bell camera
- Dual-zoned central heating and air conditioning systems with **NEST™** automatic setback thermostats
- Pre-wired for five-speaker surround sound at family room and loft

**Gourmet Kitchen**

- Chef's kitchen includes oversized island with prep sink, huge separate walk-in pantry
- Butler pantry with 170 bottle wine cooler connects kitchen and dining
- Hardwood cabinetry in a variety of custom finishes with full extension, soft close drawers and doors, adjustable upper shelves, pull out pot drawers and concealed hinges
- Executive Chef's Professional kitchen appliance package:
  - AGA Professional 48" Induction free-standing range with three unique ovens
  - Stainless steel chimney hood with 1000 cfm exhaust fan
  - Wolf 30" Speed oven with microwave and convection features
  - Thermador 48" side by side built-in refrigerator
  - Beko multi-cycle, 3 rack dishwasher with stainless steel interior
- Quartz solid surface countertops with complementary tile backsplash
- Oversized stainless-steel sink with complementary Kohler pull-out spray faucet

**4049 Jefferson Avenue  
Wika Ranch - Residence Two  
Features List**

**Master Suite**

- Large free-standing bathtub with deck mounted valve and hand-held spray wand
- Separate over-sized walk-in shower with tile surround
- Dual shower valve controls with separate shower head and hand-held shower wand
- Separate free-standing furniture style vanity with quartz countertops, vitreous china sinks, Toto™ toilets and Kohler plumbing fixtures

**Secondary Bathrooms**

- Solid surface countertops with backsplash
- Tile or solid surface shower surrounds with bench seats per bath
- Kohler plumbing fixtures in a variety of finishes with matching Kohler bath hardware

**Included Green Features**

- 6.0 kw Solar system
- All electric 80-gallon Hybrid water heater with 'on-demand' water sensors throughout the home to speed hot water delivery
- All electric dual-zone high efficiency heat pump and air conditioning
- Garage is pre-wired for 50-amp car charger
- High quality MERV 6+ return air filters
- Energy efficient light fixtures
- Non-combustible exterior plaster and roofing materials
- Low emitting insulation at walls and ceilings
- Low VOC caulking, paints and construction adhesives

***In an effort to continuously improve its product and respond to changing market conditions, Edenbridge Homes reserves the right to alter floorplans, elevations, specifications, amenities, finishes, pricing and availability without prior notice. The floor plans, elevations, colors and finishes as represented herein are of a conceptual nature only and may not reflect the final product.***