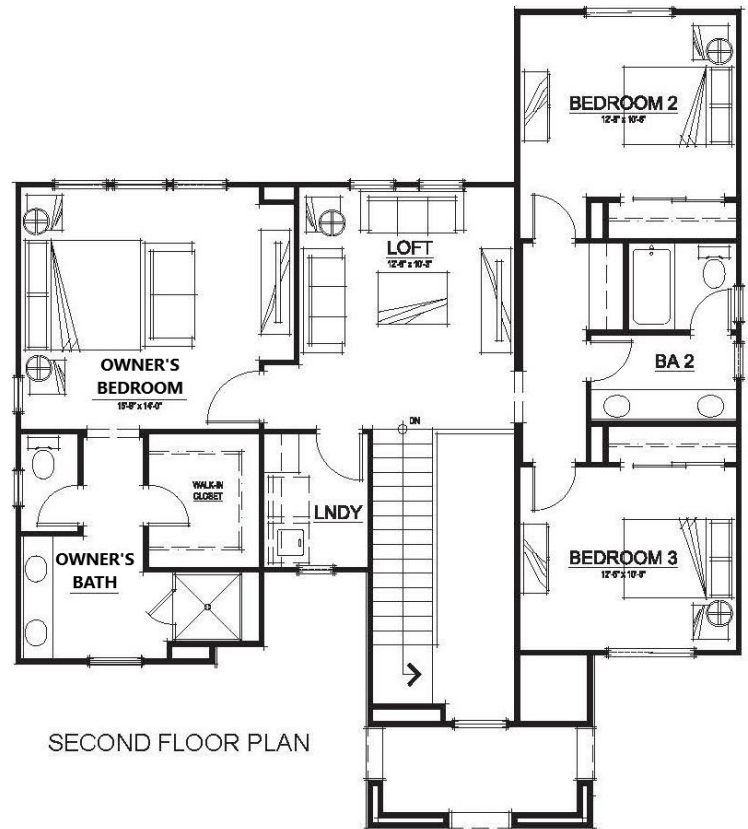
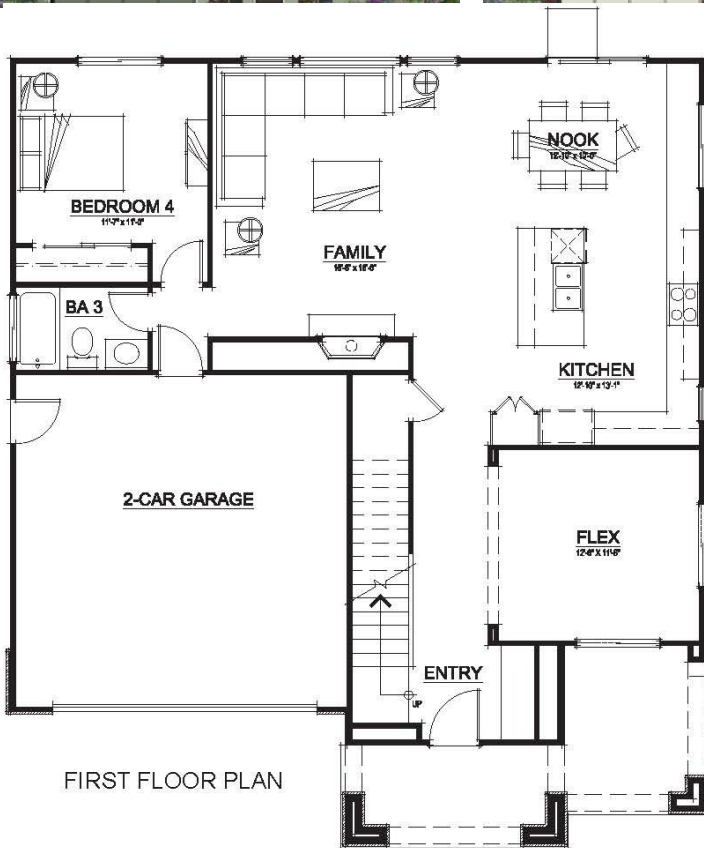


Welcome to Toscana

Plan 3 - Approximately 2,362 square feet
4 bedrooms, 3 baths and 2-car garage
Features a downstairs bedroom and flex space, upstairs loft



The largest of the Toscana collection affords comfort and elegance. As you enter the home, a wonderfully versatile flex space allows you to tailor a room to how you live, limited solely by your imagination. The kitchen features a large central island situated adjacent to a sunny dining nook, all opening into the family room, providing a large comfortable space for social gatherings. The entry level rounds out with a welcoming bedroom and adjacent bath. Meander to the top of the stairs to discover a large loft area that can serve as a media center, study, game or hobby room. Steps away is a grand owner's suite, and two additional bedrooms that share a bathroom. Enjoy easy access to shopping, employment and schools, subject to confirmation by the school district, to be Phillips Magnet Elementary School, Silverado Middle School and Napa High School. First deliveries projected in Summer 2021.

Floor-plans and elevation are artists' conceptions and may vary somewhat to actual construction and finishes.
Square footages are approximations. Price subject to change at any time.

Edenbridge Homes and Glenmere Properties, Inc. 21771 Stevens Creek Boulevard, Suite 200A, Cupertino, CA 669-231-4242 DRE 01518532
Community Sale Manager: Michelle Montez DRE 01309325 408-621-6625 michelle@edenbridgehomes.com

www.edenbridgehomes.com

Effective date April 8, 2021

Equal Housing Opportunity 