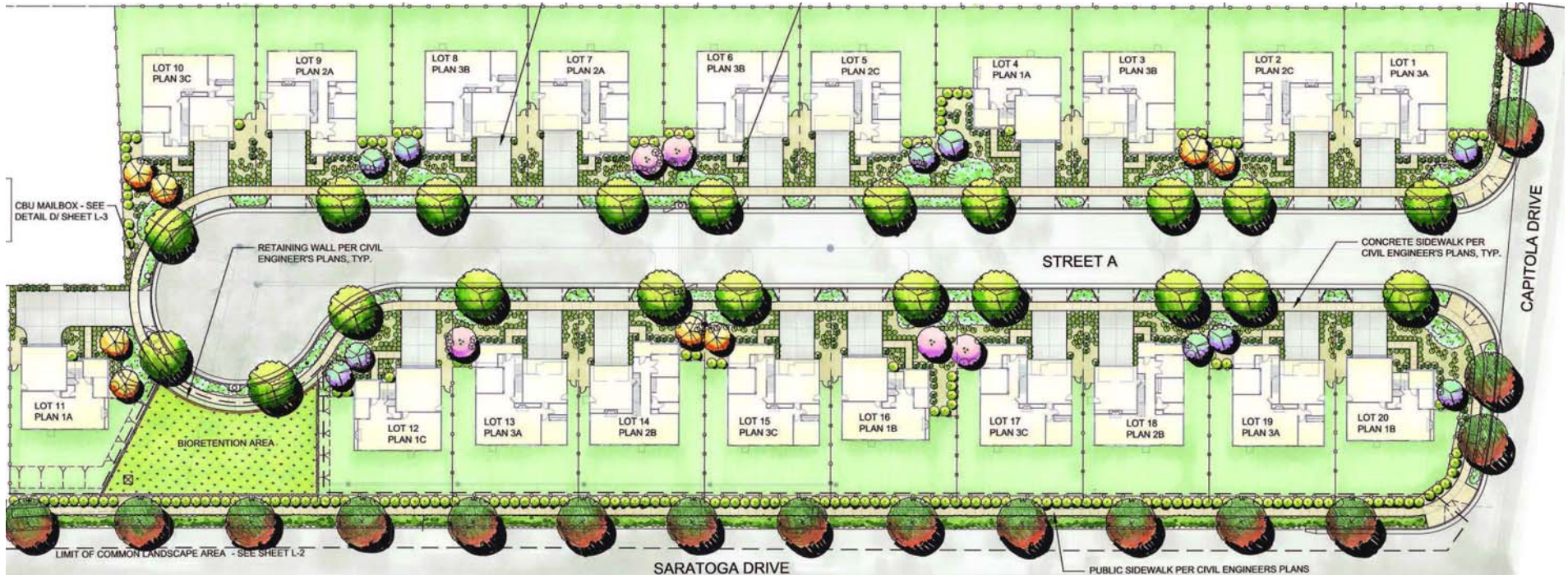


# Toscana



Coming soon! Starting construction in the Fall of 2020 will be Edenbridge Homes' latest Napa community of twenty homes on Saratoga Drive between Silverado Trail and Capitola Avenue. The community features three floor plans, each two-stories with a two-car garage, as follows:

Plan 1 is 1,968 square feet with 4 bedrooms upstairs, 2.5 baths and an upstairs tech loft

Plan 2 is 2,129 square feet with 3 bedrooms upstairs and 1 bedroom on the entry level, 3 baths and a versatile flex space on the entry level

Plan 3 is 2,362 square feet with 3 bedrooms upstairs and 1 bedroom on the entry level, 3 baths, a versatile flex space on the entry level and a loft at the upstairs landing

Each plan elevates in three different architectural styles including cottage, farmhouse and prairie exteriors.

Pricing will not be available until late 2020. Please join our interest list to be apprised of our grand opening date and pricing when available.

Edenbridge Homes is represented exclusively by Glenmere Properties, Inc. (BRE 01518532)

Contact Diane Downend, BRE 01707018 at [diane@edenbridgehomes.com](mailto:diane@edenbridgehomes.com) or 650-766-1502