

Welcome to Pacific Ridge

**Plan 4 - Approximately 4,224 square feet
5 bedrooms, 4-1/2 baths and Three Car Garage - Two Story**

Coming Soon- Nineteen New Homes in Half Moon Bay!



Style, design, quality and you are the cornerstones on which Edenbridge Homes has based the Pacific Ridge experience. One look and you'll see everything you have imagined a luxury home should be – sumptuous details, graceful design, impeccable craftsmanship and uncompromising comfort. The impressive interiors feature an array of elegant appointments including granite slab countertops, stylish wood cabinets with stately finishes, gourmet stainless steel appliances and more. Lot sizes vary from 11,000 s.f. to almost 19,000 s.f. with an overall average size of just over 14,000 s.f. Pacific Ridge is the pinnacle of new home living that only the truly discerning home buyer will appreciate.

The distinctive exteriors feature farmhouse inspired architecture in varied styles with designer color palettes and accents. The four spacious floor-plans include a single story and two-story designs, each with at least one entry level bedroom and three-car garage.

Adding to the homes themselves is the desirable Coastside lifestyle. Nestled in the foothills, the intimate enclave is conveniently located close to downtown Half Moon Bay with inviting shops and charming restaurants.

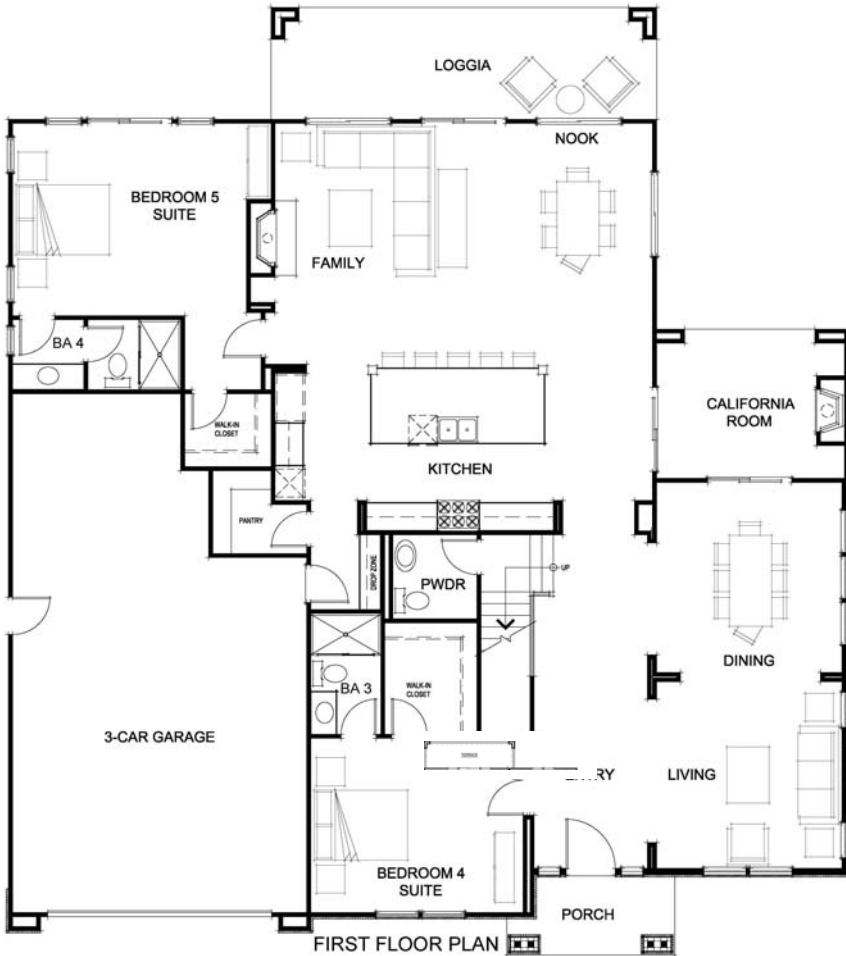
Edenbridge Homes
Represented exclusively by
Glenmere Properties, Inc.
DRE 01518532
www.edenbridgehomes.com
Equal Housing Opportunity



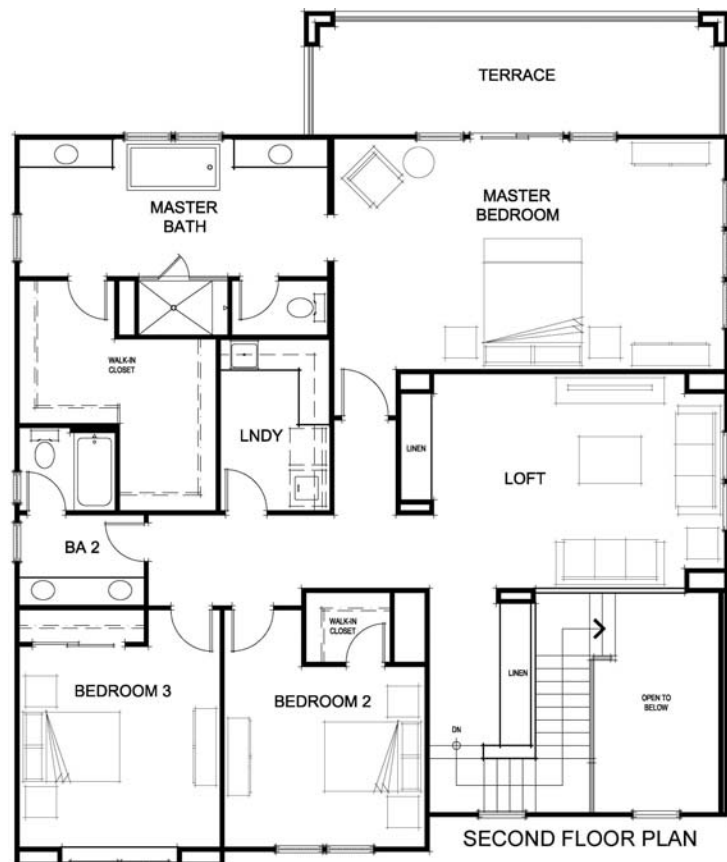
Sales Office Address: 115 Red Hawk Court, Half Moon Bay, CA
For navigation purposes only, please use 850 Terrace Avenue, Half Moon Bay
Contact: Kim Abelite 408-410-3334
BRE 01305220 kim@edenbridgehomes.com

Welcome to Pacific Ridge

**Plan 4 - Approximately 4,224 square feet
5 bedrooms, 4-1/2 baths and Three Car Garage - Two Story**



The largest residence in the Pacific Ridge collection, this gorgeous and stylish home affords two entry level bedroom suites surrounded by all the comforts of home! A spacious kitchen and nook with a central island sits adjacent to the fireplace-adorned family room and steps away from the formal living room and dining room. A grand loggia situated off the family room affords a tranquil setting for outdoor living. Upstairs features a large master suite, two additional bedrooms that share a bath, and a centrally located laundry room. Rounding out the upstairs is a versatile loft area.



Floorplans and elevation are artists' conceptions and may vary somewhat to actual construction and finishes. Price is subject to change at any time.

Edenbridge Homes
 Represented exclusively by Glenmere Properties, Inc.
 DRE 01518532
www.edenbridgehomes.com
 Equal Housing Opportunity

Sales Office Address: 115 Red Hawk Court, Half Moon Bay, CA
 For navigation purposes only, please use 850 Terrace Avenue, Half Moon Bay
 Contact: Kim Abelite 408-410-3334
 BRE 01305220 kim@edenbridgehomes.com